

Lawrence Historical Society Newsletter

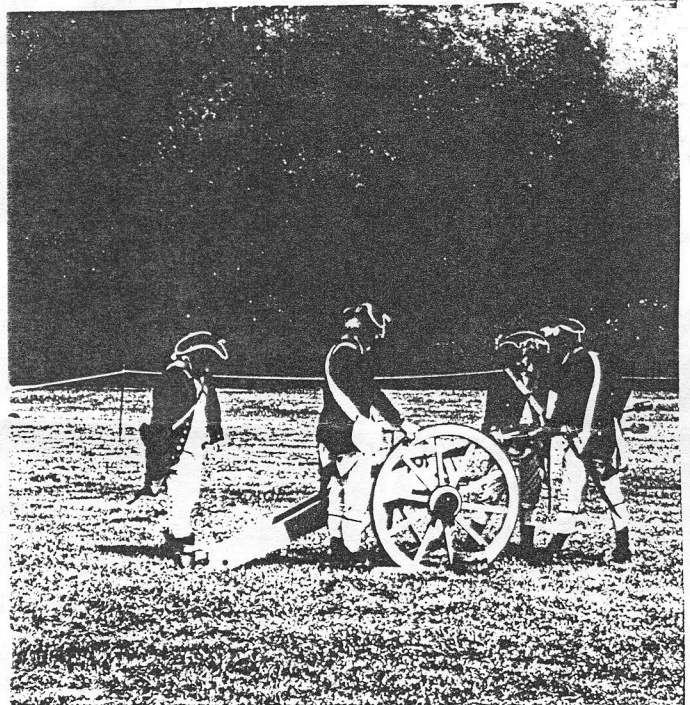
Fall-Winter 1998

1998 Brearley House Tours

Sept. 5th 10 am
Sept. 13th 12noon-5pm
Oct. 3rd 10 am
Oct. 18th 3pm*
Nov. 7th 10 am

Tours are rain or shine. The 1761 John Brearley house is located at the end of Meadow Rd., off of Princeton Pike, just 3 miles south of the Princeton Battlefield.

*This tour date is a fundraiser with an entrance fee of \$8 per carload. All other tours are free.



The Brearley House Dig Begins on Oct. 1st !

Call Chris Lahoda at 844-0857 if you wish to be a docent and help guide the 8th-grade, Lawrence Middle School students in an archeological dig. Lawrence Township 's Superintendent of Schools Claire Sheff Kohn is digging with us! Details of training and dig dates inside.

INSIDE THIS EDITION.....

NJ Historic Preservation license plate now available.

Meadow Lakes residents tour.

Brearley House will have a caretaker

Historical Society wish list.

Joan Lawrence new board member

Huzzah! Huzzah! Prepare for the Revolutionary War Encampment on Sept. 13th !

"We'll get things off to a rousing start by firing the cannon" said an officer from Mott's Artillery last year, and he was right, last year's event was a blast - over 600 people attended on the lawns surrounding the Brearley House.

This year's encampment will be on Sunday, Sept. 13th, from 12noon-5pm.

There is no rain date for this free event.

Mott's Artillery is men, women and child re-enactors who dress in Colonial garb and pitch field tents, execute military manuevers, carry out cooking and domestic chores, and even play games, all authentic to 1761, the year the Brearley House was built. Event chairman Colette Coolbaugh needs society members to help with this fun, family event - please call her at 771-0711 to volunteer a few hours. Col. Edward Hand will enlist able children into the New Jersey colonial regiment beginning at 1 pm. Food will be available, or bring a picnic blanket and

ENCAMPMENT ON SEPT. 13TH (cont.)

your own repast. There will be scheduled tours of the Brearley House, Brearley House tee shirts for sale and a display of the artifacts found from the November 1996 archeological dig. Children can buy tri-corner hats and practice manuevers with Revolutionary War soldiers and see how life was like for a child in colonial New Jersey.

Don't Forget the Canal House!

Private, group tours of the Port Mercer Canal House, the headquarters of the Lawrence Historical Society, can be arranged by calling society president Ruth Barringer at 609-883-3462. The canal house will be open to the public on Dec. 13th for our Wassail Party.

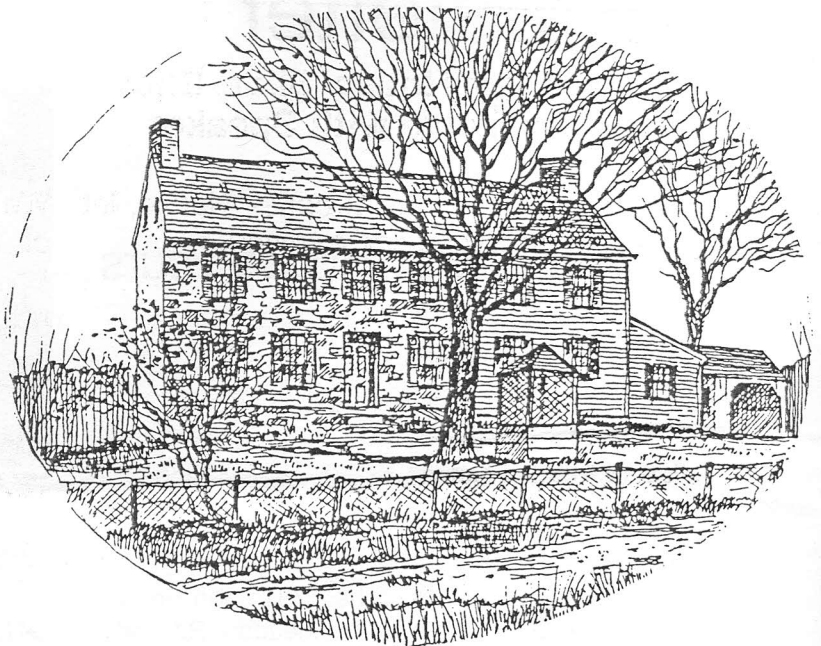
Visit Us at Lawrence Community Day on Oct. 4th

Stop by the Lawrence Historical Society's table at Village Park from 12noon to 4 pm. We'll have plans for the Brearley House restoration on display and a dig update.

The Lawrence Historical Society

President	Ruth Barringer
Vice-President	Alison Roth
Secretary	Janet Bickal
Treasurer	Frank McKittrick

Board: Bill Agress, Colette Coolbaugh, Paul Gatterdam, Betsey Harding, Carolyn Honan, Eleanor Horne, Joan Lawrence, Chris Lahoda, Martha Logan, Bruce McGraw, Karen Perkins, Mary Tanner. Mailing Address: Box 6025, Lawrenceville, NJ, 08648.



July 4th Picnic Raises \$5,000

Thanks to the hospitality of Martha and Joe Logan, the hard work of the volunteers, and the generosity of our patrons and community, the Lawrence Historical Society met its goal of raising \$5000 at the Logan's home, Windrush Farm. Special thanks to Lawrence township mayor Greg Puliti, who read the Declaration of Independence to our guests, dressed in colonial costume, which was appropriate for Windrush Farm, built in 1790. The 100 guests and volunteers enjoyed a talk on falconry by Chris Browne, a beekeeping demonstration by Joe Logan, pony rides, a delicious barbecue, a silent auction chaired by Joan Lawrence, and tours of the farm. Proceeds from the picnic will pay the society's commitment to the Lawrence Education Foundation's request to help underwrite the participation of the Lawrence Middle School this fall and next spring in the Brearley House archeological dig.

Lawrence Historical Society Wish List....

A 4-drawer filing cabinet...a small reception canopy or tent...sturdy, folding tables...office stationary...all donations are tax-deductible. Please call Ruth Barringer for information at 609-883-3462.

Brearley House Slide Show Available with Speaker

If you can't get to the Brearley House, let the Brearley House come to you.

Members of the board of directors can come to your club, organization, scout troop, senior citizen meeting or family reunion and give an informal talk with slides on the progress of the Brearley House restoration and the fascinating history of the house. A slide show and talk can be tailored to the age and interests of your audience. Please call Ruth Barringer at 609-883-3462 to set up a speaker.



New Brearley House tee-shirts come in children's medium and large (\$8) and adult sizes medium, large and x-large (\$10). Tee shirts and butcher-block aprons with the same Brearley House logo will be on sale during the Brearley House tours, Community Day, and the Revolutionary War encampment.

Historic Preservation License Plates Now Available for \$50

You can buy a "Discover New Jersey" license plate at all 47 Motor Vehicles services agencies for an initial fee of \$50, plus an annual renewal fee of \$10.

Just take your registration and current plates to any Motor Vehicles office for new plates or call 609-292-6500 on weekdays from 8:30am-4:30pm for an application to receive your plates by mail. Proceeds from the sale go to historical research, exhibits, educational programs and the preservation of buildings.

Joan Lawrence New Board Member

We welcome Joan Lawrence to the board of directors of the Lawrence Historical Society. Joan is new to the area; she has a love of antiques and history, especially fine linens. She recently chaired the silent auction at our Windrush Farm picnic, and you can meet her at our Revolutionary War encampment on Sept. 13th where she'll be stationed at the information and sales booth.

Mary Tanner On the Go!

A group of Meadow Lakes residents, escorted by Mary Jane Fleming, resident activities coordinator at the retirement community, toured the Port Mercer Canal House in July. Lawrence Historical Society board member Mary Tanner welcomed the visitors and described the role of the bridge tender in the operation of the Delaware and Raritan Canal.

On December 10th, Mary will give a slide presentation to the Hopewell Valley Historical Society entitled "The Historic Brearley House and David Brearley - the Revolutionary Period Brought up-to-Date". Mary can also lecture about the history of Lawrenceville and the cemeteries of Lawrenceville. To schedule a slide show presentation for your group by Mary, please call her at 609-921-8696.

1998 Lawrence Historical Society Calendar

Sept. 5th	Brearley House Tour
Sept. 13th	Brearley Encampment
Oct. 3rd	Brearley House Tour
Oct. 4th	LHS at Community Day
Oct. 18th	Ian Burrow Lecture
Nov. 7th	Brearley House Tour
Dec. 13th	Canal House Wassail Party
Dec. 31st	Brearley House Bonfire



Lawrence township Mayor Greg Puliti eloquently reads the Declaration of Independence at the July 4th picnic at Windrush Farm.

Is it Martha Washington?
No, it's Martha Logan! Flanked by husband Joe Logan and Janet Bickal at the Memorial Day parade, on the LHS float.



Wassail Party at the Canal House

It's hot today outside, but by December 13th you'll be glad that the Lawrence Historical Society is serving hot wassail at the Canal House from 1-4pm for free! This holiday event attracts gingerbread shoppers and lovers of old homes decorated for Christmas and beautiful holiday music.

Ian Burrow to Lecture on New Archeological Dig Findings on Oct. 18th at the Brearley House

Lawrence Middle School Students to Participate in Talk

Dr. Ian Burrow of Hunter Research, Inc, the archeologists hired to conduct the dig at the Brearley House, will be the featured speaker on Sunday, October 18th, 1pm, to talk about the latest findings by his firm and the 150, eighth grade students from the Lawrence Middle School who will be out digging for artifacts at the 1761 farmhouse.

Dr. Chris Wooley, principal of the Lawrence Middle School, will also be in attendance and will have four students talk about a topic related to this unique project that is being partially underwritten by the Lawrence Historical Society.

The students will talk at different sites on the property before Dr. Burrow lectures at approximately 1:45pm. The event will finish with a tour of the Brearley House at 3 pm. Refreshments will be served throughout the day. The Lawrence Historical Society has organized this event as both a fundraiser for the Brearley House (admission will be \$8 per carload) and an educational afternoon for the families of the young people who are participating in the dig this fall and the balance of the school's eighth -grade population, the next 150 students, who will get to dig out at the Brearley House next spring of 1999.

In case of rain, the event will be held at an indoor location. For more information about this event, please call Alison Roth at 609-530-0953.



Dr. Ian Burrow with students at the 1996 dig.



Archeological sites at the Brearley House in 1996.

Volunteer at
Brearley House
for the Encampment!

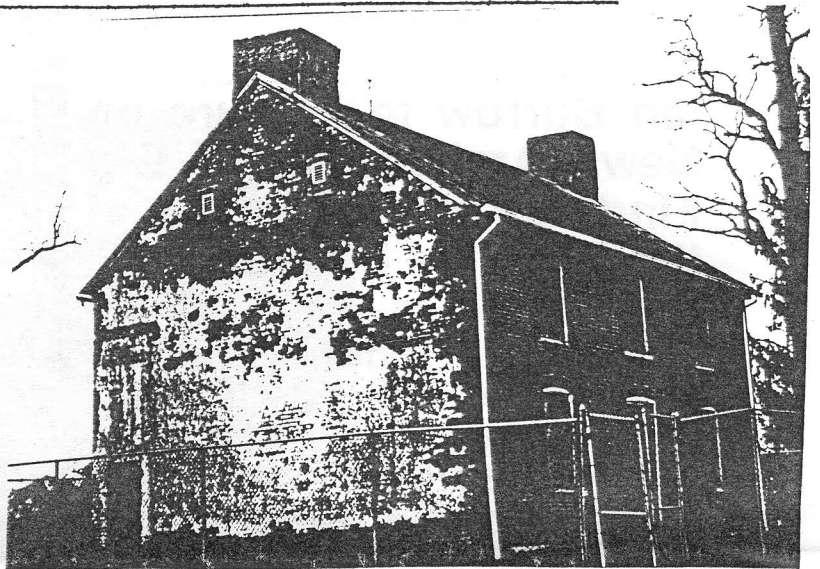
Brearley House Restoration Includes A Caretaker's Second-Floor Apartment

Requested as a security measure in light of the numerous break-ins to the house, the restored Brearley House will contain a second-floor apartment for a caretaker. The Lawrence township council voted yes to this society request, and the society agreed to foot half the bill - estimated at \$4,000 - to add the appliances and bathroom, closets and kitchen facility for the caretaker. The society cited its long, successful history of having a caretaker at the Port Mercer Canal House watch over that house, which is also a historic landmark for the township. The apartment will take up 2 rooms on the second floor of the Brearley House and some space in the new kitchen wing.

As of Aug. 25th, there have been 3 meetings to review the plans for the house with representatives from the township, the historical society, the architect, and the township historian. On Sept. 14th, 7:30pm, at the Main Street office opposite Four Star Video, the township's Historic Preservation Advisory Committee(HPAC) will review the plans. This meeting is open to the public.

This is an interesting, informative process, combing results from the archeological dig in 1996, planning for the caretaker apartment, providing for the future potential uses of the house and the grounds, being always thoughtful that the 1761 house has a beauty of space and function. When will the work start? After the HPAC votes in favor of the plan, then bids will go out to contractors who must be pre-approved to do the rehabilitation by the New Jersey Historic Trust.

Over 100 People attended the Canoe the Canal Day and Canal House Garden Party. Thanks to Kevin Connell for making the ice cream with and for the children!



34 Docents to Dig! We Still Need 10 More!

Society board member Chris Lahoda needs just 10 more volunteers to serve as docents and help guide the 8th grade students of the Lawrence Middle School in the upcoming Brearley House archeological dig. As a docent, you will receive a 90-minute training by Hunter Research at the Lawrence Middle School on Sept. 23rd or 24th. Then you will be assigned to 4 or 5 students as a mentor out at the dig at the Brearley House. Dig dates are from 9am to 2 pm, on Oct. 1st, Oct. 6th, Oct. 8th, Oct. 13th, Oct. 15th and Oct. 20th. Rain dates are the following day for each dig. *You will be asked to volunteer for just one day. But we certainly hope that you will want to sign-up for another day.* Please call Chris at 609-844-0857 to volunteer.

Rt. 206 May Become Landmark

The society received a letter of thanks from Princeton in helping to get Rt. 206 from Franklin Township, through Lawrenceville and into Trenton designated as a National Historic Landmark known as the King's Highway. George Washington and other patriots traveled Rt. 206 on numerous occasions.