

Places In Time

LAWRENCE HISTORICAL SOCIETY

WINTER 2012

Get Your Kicks on Route 206: *400 Years of Cruising Lawrence's Road of Many Names*

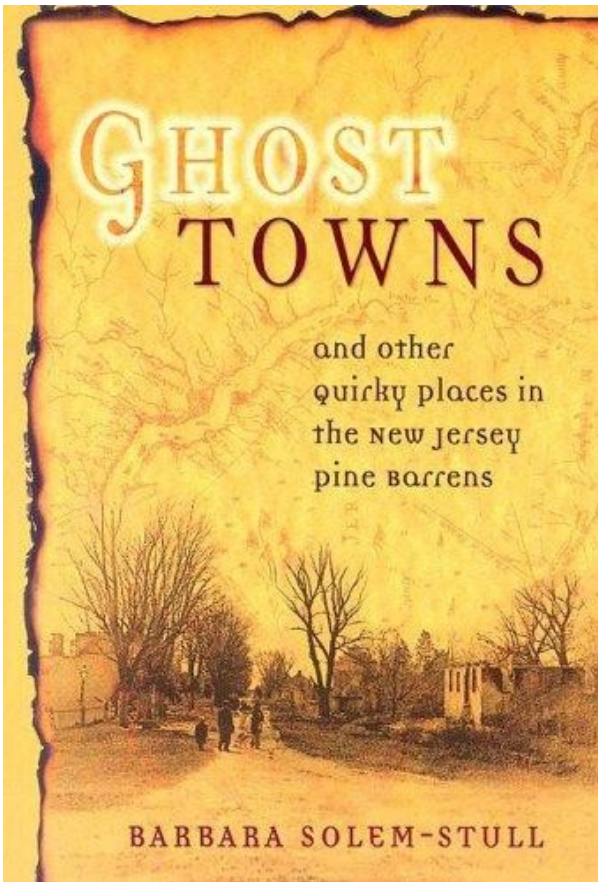
We know it today as Route 206, but in years gone by it was known by many other names, from the Assunpink Trail used by the Lenni Lenape to the King's Highway traveled by armies in the American Revolution to the Lincoln Highway in the early days of the automotive age. On Sunday, February 26th, Lawrence Township Historian Dennis Waters will discuss the ups and downs of the road's 400-year history as part of the annual meeting of the Lawrence Historical Society. The meeting will be held in the Commons at Lawrence High School beginning at 2:00 p.m. It is free and open to the public, and will close with a celebration of Lawrence Township's 315th birthday, accompanied by cake.



Photo: Maxwell Archive, Duke University

Federal Justices to Honor David Brearley

The Historical Society of the United States District Court for the District of New Jersey has decided that it is high time that they pay tribute to David Brearley. In 1777, the New Jersey State Legislature appointed David Brearley to be the Chief Justice of that court. Brearley's twenty first century successors will celebrate his many achievements including the first ruling that a statute was unconstitutional. But David Brearley is noted primarily for his crucial role as a delegate to the United States Constitutional Convention in 1787 where he broke a deadlock between the large and small states. It was Brearley who suggested the Electoral College and also the office of Vice President. How fitting that the present day justices of his court will celebrate his legacy at the Brearley House as guests of the Lawrence Historical Society.



Pine Barrens Talk

Barbara Solem-Stull will discuss her latest book, *Ghost Towns and Other Quirky Places in the New Jersey Pine Barrens*, on Thursday, March 22 at 7:00pm at Lawrence Headquarters Branch Library. Solem-Stull is also the author of *The Forks: A Brief History of the Area* and various articles about the Pine Barrens. Event is co-sponsored by The Friends of the Lawrence Library and refreshments will be served.

Constitution Review

The Board of Trustees proposes a committee be formed to review the society's constitution. The board would like the committee to review the document and make suggestions regarding topics that are omitted, areas that require rewording for clarity, and possible sections that should be struck. Suggestions will be read at a future membership meeting and brought to a vote by members after a reading at a second membership meeting. Please watch the newsletter and e-mail newsletter for future meeting announcements. To volunteer to serve on the committee, please contact us at webmaster@thelhs.org, leave us a message at 895-1728, or send us a note at PO BOX 6025, Lawrenceville, NJ 08648.

Garden Volunteers Needed

Do you like to garden? We need volunteers to help care for the gardens at Port Mercer Canal House. Duties include weeding, raking, occasional planting and mulching. If you are interested in helping out, please contact us at webmaster@thelhs.org, leave us a message at 895-1728, or send us a note at PO BOX 6025, Lawrenceville, NJ 08648

Waters to Repeat Trolley Talk

If you missed last year's annual meeting, an encore performance of the lecture will be given at the Lawrence Headquarters Branch Library on May 20 at 2:00pm. Town Historian Dennis Waters will talk about the trolley age in Lawrence township, complete with photographs, fun anecdotes, and information on how to locate trolley relics today. Refreshments will be served.

Photo Exhibit A Fun Trip Down Memory Lane

As part of the Lawrence Headquarters Branch Library's 50th Anniversary Celebration, the society sponsored a photo exhibit called Lawrence Through the Ages. The exhibit featured over 150 photographs that spanned from the 1850s to 2011 and covered topics such as schools, social life, and the changing landscape of the township. The popular display was up for all of December and the society received many comments from those that came out to see the photos. Many visitors recalled stories, long-gone businesses and pointed out favorite pictures. The society would like to thank Ashley Morris, Janet Bickal, Laura Nawrocik, and Le Camera of Nassau Park for their help in putting the exhibit together.

Board nominees:

Laura Nawrocik
Dennis Waters
Janet Bickal
Ruth Barringer
Bill Agress
Bruce Bitcover
Paul Gatterdam
John Halvorsen
Jaqueline Haun
Carolyn Kozlowski
Beverly Rubman
Jim Williams
Jane Fetter
Paul Larson



World War I Red Cross Workers, Slackwood 1918

The Lawrence Historical Society
P.O. Box 6025
Lawrenceville, N.J. 08648

Return Service Requested

Current Resident or:



Places in Time is published four times a year by the Lawrence Historical Society. Back issues are available at the LHS website—www.TheLHS.org. Contributors for this issue: Rina Banerjee (editor), Dennis Waters, Janet Bickal and Laura Nawrocik. We can be contacted at the following address: webmaster@thelhs.org. The Lawrence Historical Society received an operating support grant from the New Jersey Historical Commission, a division of the Department of State.

Celebrate with us! *Renew Your Membership for 2012 Today.*

Use your credit card to renew online today at www.TheLHS.org, or complete the form below and return with your check. *Please be sure to include your email address.* We are trying to save paper and postage!

YES, please renew my membership for 2012 at the following level:

- Benefactor (\$100)
 - Patron/Business (\$50)
 - Family (\$40)
 - Individual (\$20)
 - Student/Senior (\$10/person)
- Please accept my extra donation of \$ _____

Name: _____

Street: _____

City: _____ State: _____ Zip: _____

Email: _____ Phone: _____

Make check payable to: The Lawrence Historical Society, PO Box 6025, Lawrence Township, NJ 08648
The Lawrence Historical Society is a 501(c)(3) tax-exempt organization. Dues and donations are tax deductible to the extent permitted by law.